

Winter and summer upwelling modes and their biological importance in the California Current Ecosystem

BRYAN A. BLACK*, ISAAC D. SCHROEDER†, WILLIAM J. SYDEMAN‡§, STEVEN J. BOGRAD†, BRIAN K. WELLS¶ and FRANKLIN B. SCHWING†

*Oregon State University Hatfield Marine Science Center, 2030 SE Marine Science Center, Newport, OR 97365, USA, †NOAA, Southwest Fisheries Science Center, Environmental Research Division, 1352 Lighthouse Avenue, Pacific Grove, CA 93950-2097, USA, ‡Farallon Institute for Advanced Ecosystem Research, PO Box 750756, Petaluma, CA 94954, USA, §Bodega Marine Laboratory, 2099 Westside Road, Bodega Bay, CA 94923, ¶NOAA, Southwest Fisheries Science Center, Fisheries Ecology Division, 110 Shaffer Road, Santa Cruz, CA 95060, USA

Abstract

Analysis of monthly coastal upwelling intensities revealed two seasonal and biologically relevant upwelling ‘modes’ in the California Current Ecosystem (CCE). The first mode reflected upwelling during the summer months and was characterized by low-frequency (multidecadal) processes, including significant ($P < 0.01$) linear trends at some latitudes. In contrast, the second mode reflected wintertime upwelling and was defined by higher-frequency variability associated with the North Pacific High and El Niño Southern Oscillation events. These modes were compared with multidecadal time series of splitnose rockfish (*Sebastes diploproa*) otolith growth, yelloweye rockfish (*S. ruberrimus*) otolith growth, Chinook salmon (*Oncorhynchus tshawytscha*) scale growth, and indices of Cassin’s auklet (*Ptychoramphus aleuticus*) and common murre (*Uria aalge*) reproduction in the central-northern CCE. In redundancy and correlation analyses, salmon growth and Cassin’s auklet fledgling success associated with the summer upwelling mode while all other time series associated with the winter upwelling mode, indicating that CCE biology was differentially sensitive to these seasonal upwelling patterns. Thus, upwelling occurred in unrelated seasonal modes with contrasting trends, atmospheric forcing mechanisms, and impacts on the biology of the CCE, underscoring the importance of seasonality when evaluating ecosystem response to climate variability and change.

Keywords: Cassin’s auklet, Chinook salmon, climate change, common murre, dendrochronology, rockfish, sclerochronology, upwelling

Received 5 December 2010 and accepted 15 February 2011

Introduction

By charging the photic zone with deep, nutrient-rich water, coastal upwelling supports some of the most productive and economically valuable marine ecosystems in the world. One of the most important of these is the California Current Ecosystem (CCE), spanning more than 2000 km along the west coast of North America. Here, the bottom-up influences of upwelling are critical to ecosystem structure and function and have been documented across a wide range of trophic levels including mesozooplankton (Roemmich & McGowan, 1995; Dorman *et al.*, 2005; Hooff & Peterson, 2006), benthic crustaceans (Shanks & Roegner, 2007), demersal fish (Field *et al.*, 2007; Black *et al.*, 2008),

pelagic fish (Schirripa & Colbert, 2006), seabirds (Miller & Sydeman, 2004; Schroeder *et al.*, 2009), and mammals (Sydeman & Allen, 1999), among others.

Forced by seasonal variations in along-shore winds, CCE upwelling is generally lowest during the winter and increases to peak levels during the late spring and summer months (Bograd *et al.*, 2009). This pattern has led to the general acceptance of a March through August ‘upwelling season’ (Garcia-Reyes & Largier, 2010), to which productivity of CCE communities traditionally has been associated (e.g., Wells *et al.*, 2008). Yet upwelling during other times of the year may also strongly influence ecosystem dynamics, and an increasing number of studies have indicated that the winter may be particularly important. For example, climate in the winter months has been linked to year-class strength in an array of groundfish species (Hollowed & Wooster, 1992). Logerwell *et al.* (2003) noted the importance of wintertime climate to coho salmon (*Oncorhynchus kisutch*) marine survival along the Oregon

Correspondence: Bryan Black, Oregon State University Hatfield Marine Science Center, 2030 SE Marine Science Center, Newport, OR 97365, USA, tel./fax 541-867-0283, e-mail: bryan.black@oregonstate.edu

coast. Farther south along the California coast, seabird reproductive success and Pacific rockfish (*Sebastes* spp.) otolith growth-increment chronologies were more closely related to ocean conditions in February and March than any other month of the year (Schroeder *et al.*, 2009; Black *et al.*, 2010).

The fact that some CCE biological processes relate to climate variability in the winter while others appear to relate to climate variability in the summer suggests that upwelling occurs in distinct seasonal 'modes' to which biological components of the CCE are differentially sensitive. To test this hypothesis, we (1) used principal components analysis (PCA) to describe the dominant seasonal structure (or modes) in 64-year records of monthly upwelling indices (UIs) between 33 and 45°N latitude and (2) verified biological relevance by relating these upwelling modes to a diverse array of multi-decadal rockfish, salmon, and seabird biological time series. Given concerns about possible shifts in the location, strength, and timing of upwelling-favorable winds as a consequence of global warming (Bakun, 1990; Bakun *et al.*, 2010; Perez *et al.*, 2010), we also (3) investigated differences in the atmospheric mechanisms forcing seasonal upwelling modes and (4) tested for the presence of long-term trends. In so doing, we describe winter and summer upwelling modes that vary independently of one another, are biologically relevant, and underscore the importance of seasonality when assessing the impacts of climate variability and change.

Materials and methods

UIs and forcing mechanisms

The coastal UI represents the magnitude of the offshore component of Ekman transport in which positive values indicate upwelling while negative values indicate downwelling. Monthly UI values were obtained through NOAA at <http://www.pfeg.noaa.gov/> for five stations in the CCE separated by 3° latitude (33°N, 119°W; 36°N, 122°W; 39°N, 125°W; 42°N, 125°W; and 45°N, 125°W), all of which spanned the 64-year period from 1946 through 2009 (Bakun, 1973; Schwing *et al.*, 1996). UIs were arranged into a 60-month (five stations; 12 months each) × 64-year matrix. Each column was normalized to a mean of 0 and SD of 1, and the matrix was subjected to a PCA. In addition to this 'coastwide' analysis, the PCA was repeated at each of the five upwelling stations using 12-month × 64-year matrices. Of particular interest was the upwelling station at 39°N, the approximate location of the biological time series used in this study.

To explore forcing mechanisms, Spearman's rank correlation was used to relate seasonal upwelling modes to monthly values of gridded NCEP/NCAR Reanalysis sea level pressure (years 1948–2009), available through NOAA at <http://www.esrl.noaa.gov/psd/data/reanalysis/reanalysis.shtml>.

Correlation and linear regression were also used to relate upwelling modes to two additional climate indicators. The first of these was an index of the North Pacific High (NPH), calculated as mean NCEP/NCAR Reanalysis sea level pressure between 20 to 45°N and 150 to 120°W. The second indicator was the Northern Oscillation Index (NOI), which reflected El Niño Southern Oscillation influences on the north-east Pacific and was calculated as the difference in sea level pressure anomalies between the NPH (35°N, 130°W) and Darwin, Australia (10°S, 130°E) (Schwing *et al.*, 2002b).

Biological time series

Leading principal components from the upwelling data were compared to seven biological time series: (1) and (2) average annual egg-laying date for the planktivorous seabird, Cassin's auklet (*Ptychoramphus aleuticus*), and the omnivorous seabird, common murre (*Uria aalge*) (data from Schroeder *et al.*, 2009), (3) and (4) annual breeding success (offspring per pair) for the auklet and the murre (data from Sydeman *et al.*, 2009), (5) and (6) annual otolith-based growth chronologies for the planktivorous splitnose (*Sebastes diploproa*) and piscivorous yelloweye rockfish (*S. ruberrimus*) (data from Black *et al.*, 2008, 2009, updated), and (7) a Chinook salmon (*Oncorhynchus tshawytscha*) chronology developed from scale growth-increment widths (data from Wells *et al.*, 2007). These time series were chosen because they (1) overlapped temporally and spatially, (2) were multidecadal in length, (3) were exactly dated, (4) represented a range of contrasting biological responses across multiple trophic levels and habitats, and (5) captured a biological response specific to each calendar year in the time series.

For seabirds, timing of breeding and breeding success have been monitored at Southeast Farallon Island (~48 km west of San Francisco Bay; 37.7°N, 123.0°W) by Point Reyes Bird Observatory under contract with the US Fish and Wildlife Service since 1971 (Ainley *et al.*, 1995; Sydeman *et al.*, 2001; Schroeder *et al.*, 2009). Briefly, dates of egg laying (as a proxy for timing of breeding) and breeding success were noted for a focal sample of reproductive pairs ($n = \sim 40 \text{ year}^{-1}$ for auklets and $n = \sim 200 \text{ year}^{-1}$ for murre). Dates of egg laying, accurate to ± 5 days, were averaged to estimate annual timing of breeding each year. As each of these species lays only one egg per clutch, breeding success was defined as the proportion of pairs successfully rearing a chick to independence (for auklets), or to 'jumping' stage (for murre). Reproductive success was therefore binary, fledged or failed (0 or 1) (Sydeman, 1999).

A yelloweye rockfish (Black *et al.*, 2008) and a splitnose rockfish (Black *et al.*, 2009) growth-increment chronology had been developed in earlier studies using standard dendrochronology (tree-ring analysis) techniques. Otoliths were obtained by commercial vessels, sport fishing vessels, and NOAA National Marine Fisheries Service surveys between approximately 35°N and 39°N. The yelloweye rockfish chronology spanned 1948 through 2003; however, the existing splitnose rockfish chronology was truncated at 1995 due to a limitation of more recent samples. In this study, splitnose rockfish

otoliths collected between 2006 and 2008 were used to extend the chronology through 2006, maximizing overlap with other biological and physical time series.

For both rockfish species, otoliths were embedded in resin, mounted on a lapidary saw, and thin-sectioned through the dorsal–ventral axis to 0.4 mm in thickness. Otolith thin sections were polished with 2000-grit sandpaper and 10 µm lapping film to reveal the annual increments. Within each species, samples were visually crossdated to ensure that all annual growth increments were assigned the correct calendar year of formation. Universally applied in tree-ring studies, crossdating was based on the assumption that some aspect of climate limited growth and varied over time, inducing synchronous patterns in the growth-increment widths of individuals within the study region. Crossdating was accomplished by matching these synchronous growth patterns among otoliths, beginning at the outermost increment that formed at the known year of capture and proceeding toward the center. If an annual increment had been missed or falsely added, the synchronous growth pattern would be offset by a year relative to that in the other samples, and the point where the offset began indicated the location of the error. At no time was crossdating ‘forced’ on an otolith. Changes in dating were only made when the missed or falsely added increment was obvious upon reinspection of the specimen. Without crossdating, errors could have accumulated and diminished accuracy, especially in early portions of a chronology.

After visual crossdating, the dorsal half of the otolith was then photographed and the annual increment widths measured continuously from the margin to as close to the focus as possible using the program IMAGEPRO PLUS v. 6.0 (Black *et al.*, 2008). Crossdating was statistically verified with the Dendrochronology Program Library program COFECHA (Holmes, 1983; Grissino-Mayer, 2001). Each otolith measurement time series was then fit with a negative exponential function and divided by the values predicted, thereby removing age-related growth declines and standardizing each time series to a mean of 1. Within each species, these detrended time series were averaged with respect to calendar year to form the master chronology. A value > 1 represented above-average growth while a value < 1 represented below-average growth. All chronology development was conducted using the program ARSTAN (developed by Ed Cook and Paul Krusic; available at <http://www.ldeo.columbia.edu/res/fac/trl/public/publicSoftware.html>). The quality of each chronology was quantified using the expressed population signal (EPS) statistic, which described how well the sample mean represents the mean of the theoretical population from which it was drawn (Wigley *et al.*, 1984). Although there is no significant threshold for this statistic, an EPS value of 0.85 or greater is considered adequate, and only those portions of the chronology that exceeded this value were retained. A total of 72 otoliths were used to develop the updated splitnose rockfish master chronology, which spanned a continuous 71-year interval from 1936 through 2006. Twenty-seven otoliths were used to develop the yelloweye rockfish master chronology, which spanned 1948–2003 (Black *et al.*, 2008).

A Chinook salmon chronology was developed using scale growth-increment widths measured by Wells *et al.* (2007). Briefly, scales were collected from all returning females at Mill Creek, a tributary of Smith River in northern California, between 1981 and 2002 ($n = 613$). Scales were cleaned and mounted between glass slides. Annual growth increments were measured from the origin along a line oriented at 20° relative to the maximum scale length (Wells *et al.*, 2003, 2007). A portion of year 1 was spent in freshwater, though the majority of growth in this first increment would have been formed at sea, where the fish remained until returning to spawn in Mill Creek during the year of capture (Wells *et al.*, 2007).

In the first step of chronology development, growth-increment widths were grouped according to fish age at the time of growth-increment formation. Only completely formed growth increments were retained. The oldest salmon were captured during the fifth year of life; therefore, growth increments were formed from ages 1 through a maximum of 4. Within each of these four classes, growth-increment widths were normalized to a mean of 0 and SD of 1. Finally, all normalized growth-increment widths ($n = 1729$) were averaged with respect to calendar year of formation to generate the final salmon chronology. Only those calendar years for which there were at least 20 normalized increment widths were retained (1978–2001). As a check of consistency, a separate chronology was developed for each of the four age classes, and these four chronologies were correlated with one another. All correlations were positive and highly significant ($P < 0.01$) with the only exceptions of year 1 vs. year 4 ($r = 0.40$; $P = 0.08$), indicating coherence in growth patterns across the four age classes.

All seven biological time series as well as the two upwelling principal components from 39°N were entered into redundancy analysis (RDA) to explore relationships between biology and climate. Next, the seven biological time series were entered into a PCA to establish their interrelationships in a procedure unconstrained by the upwelling modes. Before these analyses, all nine time series were normalized to a mean of 0 and SD of 1 over the shared 1978–2001 period. All time series were also checked to ensure that they did not contain significant ($\alpha < 0.05$) autocorrelation or linear trends over this 24-year common interval.

Biological time series were then correlated with (1) the two leading coastwide upwelling principal components (calculated for all five stations between 33 and 45°N), and then (2) the two leading upwelling principal components calculated at 39°N, the upwelling station nearest the biological time series. Spearman’s rank correlations were used due to the nonlinear relationships between some variables. Correlations were not limited to the 1978–2001 common interval used in the RDA, but instead were performed over as many years as possible. Over these longer time periods, a significant ($P < 0.05$) linear trend was present in the leading upwelling principal component at 39°N. To prevent spuriously high correlations, this trend was removed by fitting the time series with a linear regression and dividing the observed time series values by the predicted values.

Results

Upwelling modes

In the coastwide PCA, monthly UIs grouped with respect to season and showed a strong contrast between

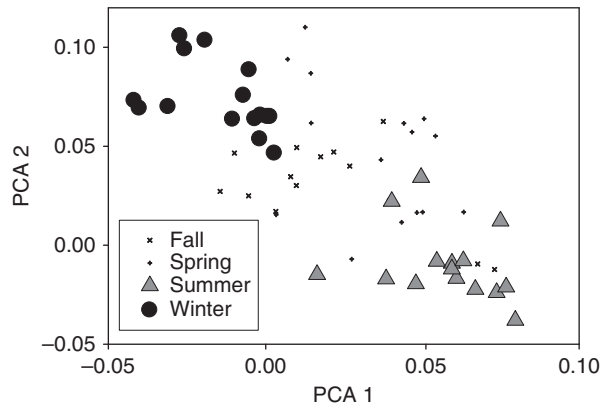


Fig. 1 Principal components analysis scores for monthly upwelling intensity data in the California Current Ecosystem. The analysis included five locations between 33 and 45°N latitude, with a total of 60 variables (12 months per year, per site). Data were divided by season: winter (January–March), spring (April–June), summer (July–September), and fall (October–December).

winter and summer months (Fig. 1). The leading two upwelling principal components ($PC1_{\text{coast}}$ and $PC2_{\text{coast}}$) explained 16% and 10% of the total variance and did not contain significant ($P < 0.05$) long-term trends, though the second principal component exhibited unusually positive values in 2007 and 2008 (Fig. 2a and b). Correlations with monthly UI data demonstrated that the principal components had highly seasonal signatures. $PC1_{\text{coast}}$ associated with the summer months (April through October; ‘summer mode’) while $PC2_{\text{coast}}$ associated with a narrower window during the winter months (January through March; ‘winter mode’) (Fig. 2c and d). Correlations with monthly UI were weakest in the northernmost latitudes of the study. The third (8.3% variance explained) and fourth (7.3% variance explained) principal components did not show a clear seasonality, did not consistently relate to biological time series (data not shown), and were therefore dropped from further analysis.

When PCA was repeated for each of the five upwelling stations, variance explained by the leading two components was considerably higher than in the full coastwide analysis (Table 1A, B). At all latitudes, the leading principal component correlated with summertime upwelling while the secondary component correlated with wintertime upwelling (Table 1A, B). For example, the leading principal component at 39°N

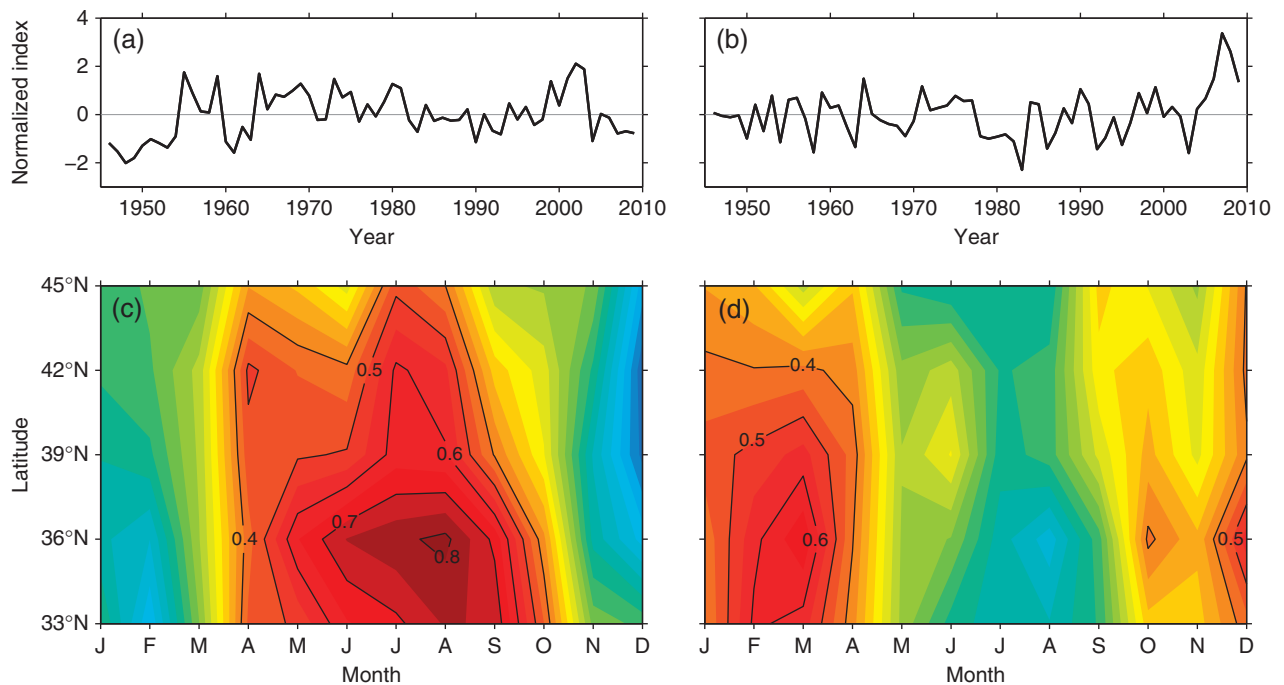


Fig. 2 (a) The leading principal component ($PC1$) extracted from monthly upwelling intensity data in the California Current Ecosystem. The analysis included five locations between 33 and 45°N latitude, with a total of 60 variables (12 months per year, per site). (b) The second PC. (c) Spearman's correlations (loadings) between $PC1$ and the monthly upwelling intensity data. (d) Spearman's correlations between $PC2$ and monthly upwelling intensity data.

(PC1_{39N}) closely tracked summer upwelling while the second component (PC2_{39N}) closely tracked winter upwelling, but not vice versa (Fig. 3). PC2_{39N} was characterized by high-frequency variability and unusually positive values in 2007 and 2008, as was observed in the coastwide analysis (Figs 2b and 3b). The apparently orthogonal relationship between wintertime and summertime upwelling was not an artifact of PCA. Mean wintertime (January, February, March) and mean summertime (June, July, August) upwelling were not significantly related and had correlation coefficients that closely approached zero at all latitudes (Table 1C).

The analysis at 39°N also illustrated important latitude-specific differences in the modes. In particular, PC1_{39N} showed a strong linear increase ($R^2 = 0.27$; $P < 0.001$) as did the leading principal component at 42°N ($P < 0.001$) (Table 1A). A weakly significant trend also occurred in the second (winter) upwelling component at 36°N, but was driven by anomalously positive values in 2007 and 2008 (Table 1B). The R^2 of the

regression dropped to 0.02 ($P = 0.32$) if these 2 years were removed. No other upwelling mode contained a significant linear trend; this pattern was restricted to the summer mode in the central portion of the study region.

Atmospheric forcing

PC2_{coast} strongly and positively correlated with wintertime (January, February, March) sea level pressure between western North America and Hawaii, the location of the NPH (Fig. 4a). Indeed, the relationship between NPH and wintertime upwelling at 39°N was particularly strong ($R^2 = 0.71$, $P < 0.0001$) (Fig. 4b). In addition to the NPH, PC2_{coast} also correlated with sea level pressure in the southwestern Pacific (Fig. 4a). Given that the NOI was calculated as the difference between the NPH and sea level pressure in Darwin, Australia, it also related quite strongly to wintertime upwelling at 39°N ($R^2 = 0.71$, $P < 0.0001$) (Fig. 4b). The relationship

Table 1 Properties of the leading (A) and second (B) principal components extracted from monthly resolved upwelling indices at five latitudes in the California Current Ecosystem. Linear trends as estimated by regression are reported, including R^2 , slope of the regression, and level of significance (P). Also shown is the Spearman's rank ($S\rho$) correlation between each principal component and mean annual Northern Oscillation Index (NOI) as well as "winter" (mean of January through March) and "summer" (mean of June through August) upwelling index. Correlations significant at the $P < 0.05$ level are given in bold. (C) Spearman's rank correlations between winter and summer upwelling index

Latitude	EV*	% var†	Linear trends			Correlation ($S\rho$)		
			R^2	Slope	P	Winter	Summer	NOI (P)
<i>(A) Upwelling PC1</i>								
33°N	4.08	34	0.00	0.00	0.74	0.06	0.95	0.07 (0.61)
36°N	3.61	30	0.02	0.01	0.33	-0.11	0.95	-0.04 (0.74)
39°N	3.03	25	0.30	0.03	<0.001	0.10	0.92	0.05 (0.71)
42°N	2.88	24	0.19	0.02	<0.001	-0.02	0.93	-0.01 (0.95)
45°N	1.74	15	0.01	0.01	0.48	0.36	0.73	-0.08 (0.53)
<i>(B) Upwelling PC2</i>								
33°N	2.22	19	0.02	0.01	0.31	0.77	-0.15	0.52 (<0.001)
36°N	2.24	19	0.07	0.01	0.03	0.82	-0.01	0.60 (<0.001)
39°N	1.71	14	0.00	0.00	0.72	0.92	-0.14	0.62 (<0.001)
42°N	1.87	16	0.02	-0.01	0.32	0.89	0.01	0.36 (<0.001)
45°N	1.68	14	0.06	-0.01	0.06	0.75	-0.41	0.19 (0.13)
Latitude			$S\rho$					
<i>(C) Winter, summer correlation</i>								
33°N			-0.02					
36°N			-0.08					
39°N			0.02					
42°N			-0.01					
45°N			-0.01					

*Eigenvalue of the principal component.

†Percent variance explained by the eigenvalue.

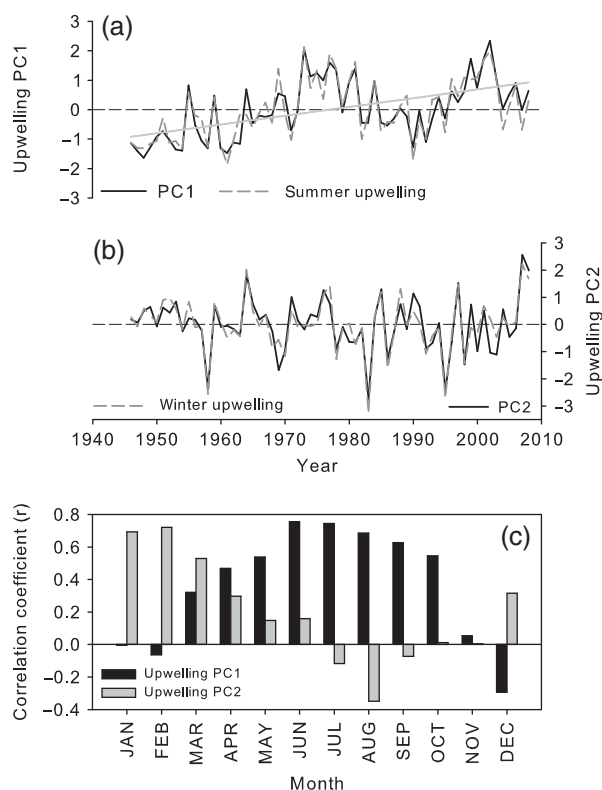


Fig. 3 (a) The leading principal component (PC1) extracted from monthly averaged upwelling intensity data at 39°N. Mean summer (June–August) upwelling at 39°N latitude is superimposed, as is a linear regression fit to PC1 ($R^2 = 0.27$). Upwelling data and upwelling principal components were normalized to a mean of 0 and SD of 1. (b) The second principal component (PC2) of upwelling at 39°N latitude. Normalized mean winter (January–March) upwelling intensity at 39°N is also shown. (c) Spearman's correlations (loadings) between the leading two principal components and monthly upwelling intensity data used to generate the principal components.

between $PC2_{\text{coast}}$ and wintertime NOI was somewhat weaker, yet highly significant (linear regression $R^2 = 0.48$, $P < 0.0001$), comparable to the relationship between $PC2_{\text{coast}}$ and wintertime NPH (linear regression $R^2 = 0.48$, $P < 0.0001$). $PC1_{\text{coast}}$ (data not shown) and summertime upwelling at all latitudes (Table 1B) were not significantly ($P < 0.05$) correlated to summertime NOI (data not shown), summertime NPH (data not shown), or annual NOI (Table 1B).

Biological relevance of upwelling modes

In a RDA of the biological time series and upwelling modes, the first axis explained 33% of the total variance and the second axis explained an additional 8%. This analysis indicated that auklet fledging success and the salmon growth-increment chronology were most clo-

sely related to $PC1_{39N}$ (summer mode) while the other biological time series were most closely related with $PC2_{39N}$ (winter mode) (Fig. 5a). A PCA unconstrained by environmental variables also separated auklet fledging success and the salmon growth-increment chronology from the other biological time series (Fig. 5b). The leading principal component explained 59% of the total variance and the second axis explained an additional 16%.

Correlations between biological time series and upwelling principal components (coastwide and 39°N data sets) were consistent with the RDA results. All significant correlations involved the second principal component with the only exception of auklet reproductive success and the salmon chronology (Table 2). Although relationships were stronger and more consistent with UI data from 39°N, biological time series correlated with one or the other principal component, but not both. Correlations were such that high principal component values, which indicated above-average upwelling, were associated with early lay dates, high fledging success, and wide rockfish and salmon growth increments (Table 2).

Discussion

These analyses demonstrated that CCE upwelling contained two distinct and unrelated seasonal modes specific to the winter and the summer months. A particularly defining characteristic of the summer mode was that it exhibited significant linear increases in the central portion of the study region. This was consistent with previous reports of spring and summertime upwelling intensification in the same area of the CCE (Schwing & Mendelssohn, 1997), a pattern recently corroborated by long-term trends in buoy-based wind and SST data at 39°N (Garcia-Reyes & Largier, 2010). In comparison, the winter mode contained anomalously positive values in 2007 and 2008, which indicated unusually strong January through March upwelling in these 2 years. Yet, there was no evidence at any latitude of long-term, linear trends, underscoring the fact that intensification signals were restricted to the summer months.

Winter mode upwelling was closely tied to wintertime sea level pressure and ENSO activity, as indicated by strong relationships with the NOI and NPH. Consistent with this, winter-mode upwelling significantly correlated with wintertime sea surface temperatures not only along the western coast of the United States, but also across a broad extent of the tropical Pacific (Fig. S1). By contrast, summer mode upwelling did not correlate with summer (or even winter) sea level pressure or temperature variables used in this study. Instead, these

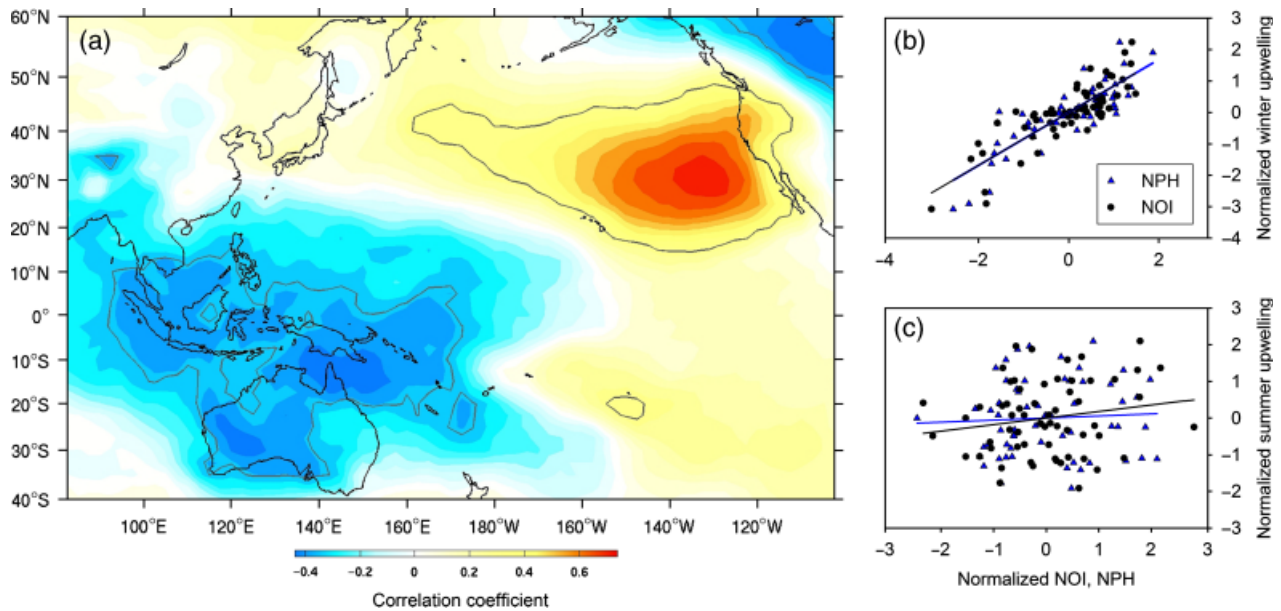


Fig. 4 (a) Spearman's correlations between upwelling PC2 'winter mode' calculated from the coastwide data set and mean wintertime (January–March) sea level pressure in the Pacific basin. Gray lines enclose regions in which correlations were significant ($P < 0.001$). (b) The relationships between mean wintertime (January–March) upwelling at 39°N latitude and the North Pacific High (NPH). Superimposed is the relationship between winter upwelling at 39°N and the Northern Oscillation Index (NOI). (c) Relationships between summer (June–August) upwelling at 39°N latitude and the summertime NOI and NPH.

summer upwelling processes may have been linked to much more local climate drivers, including fine-scale gradients in cross-shore pressure or temperature (Schwing *et al.*, 2002a). The fact that winter upwelling correlated with synoptic-scale pressure and temperature variables while summer did not suggested that the two modes were forced by contrasting atmospheric mechanisms, which could account for such dramatic differences between winter and summer upwelling on high- and low-frequency domains.

A unique aspect of this study was that it integrated a diverse set of biological time series spanning a range of species, life histories, habitats, and trophic levels. Central to this comparative approach was the development of otolith and scale chronologies, which served as continuous, annually resolved proxies of fish growth. Indeed, past studies have demonstrated relationships between salmon body size and scale growth-increment width as well as relationships among rockfish otolith growth-increment width, indices of CCE productivity, and levels of fish visceral fat (Lenarz & Echeverria, 1986; Woodbury, 1999; Thompson & Hannah, 2010). In combination, these chronologies, seabird lay dates, and records of seabird fledgling success independently corroborated the importance of upwelling modes on the biology of the CCE, and did so over timescales that spanned multiple decades.

Of the seven biological time series considered in this study, the growth-increment chronology generated from Smith River Chinook salmon was one of the two that significantly related to the summer mode, consistent with Wells *et al.* (2008) who found that spring and summer upwelling was important to scale growth-increment width in this largely piscivorous species (Daly *et al.*, 2009). Summer upwelling was also strongly related to auklet fledgling success and may have maintained a constant and/or adequate prey base for this planktivorous seabird across its extended reproductive season, which in some years can span from March through September (Abraham & Sydeman, 2004). Upwelling throughout the reproductive period could have facilitated a second reproductive attempt following a successful first attempt. Average reproductive success > 1 chick pair⁻¹ did occur in extremely favorable years (e.g., 2002) and may have played a critical role in driving the relationship between upwelling and seabird productivity (Abraham & Sydeman, 2006) (Fig. 6e). By contrast, the 2 years in which auklet fledgling success fell to zero (2005 and 2006) were not accompanied by unusually low levels of summer upwelling, indicating that other physical or biological factors must have contributed to these reproductive failures. Notably, no trends were apparent in these summer-sensitive biological time series despite significant increases in summer

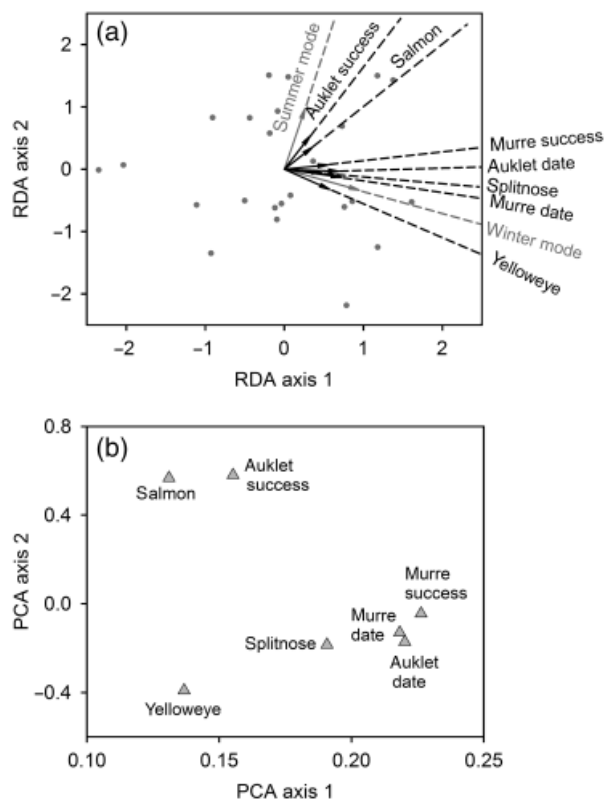


Fig. 5 (a) Redundancy analysis biplot including the summer mode (leading principal component from monthly upwelling data) and the winter mode (the second principal component) at 39°N latitude as well as seven biological time series: a splitnose rockfish growth-increment chronology, a yelloweye rockfish growth-increment chronology, a Chinook salmon growth-increment chronology, and common murre and Cassin's auklet egg lay date and fledgling survivorship. Dotted lines are extensions of biological and physical variable vectors to enhance figure clarity. Gray dots are scores for each calendar year in the analysis: 1978–2001. (b) Scores from a principal components analysis of the seven biological time series over the 1978–2001 common interval.

upwelling between 39 and 42°N. However, salmon and auklet fledgling success were most closely related to the coastwide summer upwelling mode, which itself lacked long-term trends. Moreover, the intervals spanned by summer-sensitive biological time series were too short to capture intensification signals; where they did occur, such monotonic increases were only evident over the full 64-year upwelling record.

In comparison to the summer mode, the subordinate winter mode was significantly correlated with a greater number of the biological time series included in this study. This result was consistent with Black *et al.* (2010) in which central CCE rockfish growth-increment chronologies and seabird lay dates related more strongly to

February upwelling than indices of summer climate or the spring transition. A possible mechanism may be that the water column was weakly stratified in winter months, and that intermittent northerly winds favored by a strong NPH were sufficient to initiate upwelling during a time of the year it may not otherwise occur (Schroeder *et al.*, 2009). Under such a scenario, these wintertime pulses could have lengthened the total growing season for rockfish and also allowed seabirds to improve prebreeding nutritional status, favoring early lay dates, high fledgling survival, and wide otolith growth increments. On broader spatial scales, this winter mode linked to the NPH may reflect a larger, coherent winter climate pattern across the northeastern Pacific region. For example, wintertime climate was associated with linkages in the growth patterns of rockfish, bivalves, and high-elevation trees from Alaska to southern California (Black *et al.*, 2009). Even in the terrestrial ecosystem, almost a quarter (23) of the 122 tree-ring chronologies available for Oregon and California through the NOAA International Tree-Ring Data Bank (extending through at least 1990) significantly ($P < 0.01$) correlated with wintertime NOI while only two significantly correlated with summertime NOI (data not shown).

In summary, upwelling in the CCE was characterized by two distinct seasonal modes to which biological time series were differentially sensitive. From a practical perspective these modes may afford some level of predictive power; upwelling from January through March should more closely correspond to winter-sensitive biological process while upwelling from June through August should more closely correspond to summer-sensitive biological processes. This could be relevant not only on interannual timescales, but also with respect to long-term trends associated with climate change. For example, summer upwelling has shown significant increases between 39 and 42°N and our results suggest that summer-sensitive biological processes would be most strongly affected, especially if these trends become more pronounced and occur across broader spatial scales. Likewise, frequent or severe El Niño events and related impacts on wintertime upwelling would more heavily impact winter-sensitive biological processes. The ecological impacts of any long-term changes in upwelling mean or variance have been a concern in the CCE. However, the results from this study suggest that the seasonality of climate response adds another layer of complexity, especially if one mode changes on a trajectory different from the other. The probability of such divergences between winter and summer modes and its effects on the system were beyond the scope of this study. Yet the results do demonstrate that both modes are integral to the physi-

Table 2 Spearman's rank coefficients ($S\rho$) and level of significance (P) for correlations between upwelling modes in the California Current Ecosystem and biological time series

Biological time series	Span (years)	Coastwide				39°N Latitude			
		PC1		PC2		PC1		PC2	
		$S\rho$	P	$S\rho$	P	$S\rho$	P	$S\rho$	P
Murre lay date	1972:2006	-0.16	0.37	-0.12	0.49	0.07	0.66	-0.44	0.007
Auklet lay date	1972:2006	-0.31	0.07	-0.36	0.03	-0.21	0.23	-0.52	0.001
Murre success	1972:2006	0.11	0.49	0.10	0.55	-0.08	0.64	0.35	0.04
Auklet success	1972:2006	0.51	0.002	-0.22	0.20	0.33	0.04	-0.17	0.30
Splitnose crn	1946:2006	0.15	0.23	0.42	0.001	0.17	0.18	0.45	0.001
Yelloweye crn	1946:2003	-0.04	0.77	0.21	0.12	-0.07	0.58	0.34	0.01
Salmon crn	1978:2001	0.54	0.006	0.25	0.23	0.32	0.12	0.23	0.26

Biological time series are mean annual lay date and fledgling success for common murre and Cassin's auklet, otolith growth-increment chronologies for yelloweye and splitnose rockfish, and a scale growth-increment chronology for Chinook salmon. Upwelling data are analyzed for two spatial scales: 39°N as well as coastwide, compiled between 33 and 45°N. The leading principal component (PC1) of upwelling data is 'summer mode' while the secondary (PC2) is 'winter mode.' Correlations significant at the $P < 0.05$ level are given in bold.

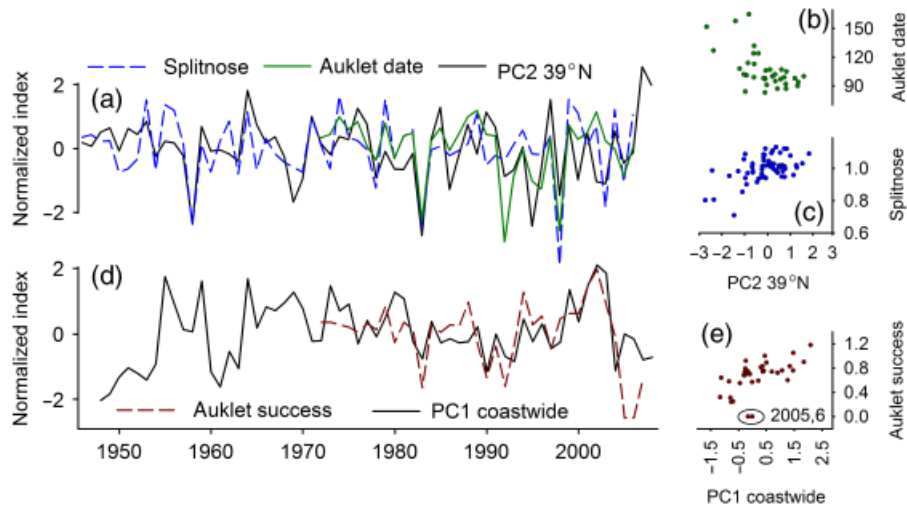


Fig. 6 (a) Normalized time series of upwelling PC2 at 39°N (winter mode), the splitnose growth-increment chronology, and negative values of auklet lay date. Negative values of auklet lay date are shown to facilitate comparison. (b) Auklet lay date (day of year) and PC2 at 39°N, (c) the splitnose rockfish growth-increment chronology and PC2 at 39°N, and (d) and (e) auklet fledgling success and coastwide upwelling PC1. Fledgling success was 0 in 2005 and 2006.

cal and biological structure of the CCE, explain differences in patterns of biological time series from the region, and underscore the importance of considering seasonality when addressing the impacts of climate variability and change.

Acknowledgements

The seabird research was conducted and funded by PRBO Conservation Science on the Farallon National Wildlife Refuge, in collaboration with the US Fish and Wildlife Service. We thank

PRBO and USFWS for data contributions to this project. Funding was provided by NOAA's Fisheries and the Environment (FATE) program and the California Ocean Protection Council and California Sea Grant under grant R/OPCENV-07 entitled 'Tackling Climate Change and Ecological Complexity: Matches and Mismatches in the Seasonal Cycle of California's Marine Flora and Fauna'. Funding was also provided through the National Science Foundation under grant 0929017 entitled 'Importance of winter upwelling to California Current ecosystem dynamics'. Special thanks to S. A. Thompson, J. Thayer and J. Largier for reviewing a draft of this manuscript. We also thank D. Pearson for providing the rockfish otoliths necessary to extend the splitnose rockfish growth-increment chronology.

References

- Abraham CL, Sydeman WJ (2004) Ocean climate, euphausiids and auklet nesting: inter-annual trends and variation in phenology, diet and growth of a planktivorous seabird, *Ptychoramphus aleuticus*. *Marine Ecology Progress Series*, **274**, 235–250.
- Abraham CL, Sydeman WJ (2006) Prey-switching by Cassin's auklet *Ptychoramphus aleuticus* reveals seasonal climate-related cycles of *Euphausia pacifica* and *Thysanoessa spinifera*. *Marine Ecology Progress Series*, **313**, 271–283.
- Ainley DG, Sydeman WJ, Norton J (1995) Upper trophic level predators indicate interannual negative and positive anomalies in the California Current food-web. *Marine Ecology Progress Series*, **118**, 69–79.
- Bakun A (1973) *Coastal upwelling indices, west coast of North America, 1946–71*. In: NMFS Special Scientific Report, Fisheries 693, Washington, DC, 114 pp.
- Bakun A (1990) Global climate change and intensification of coastal ocean upwelling. *Science*, **247**, 198–201.
- Bakun A, Field DB, Redondo-Rodriguez A, Weeks SJ (2010) Greenhouse gas, upwelling-favorable winds, and the future of coastal ocean upwelling ecosystems. *Global Change Biology*, **16**, 1213–1228.
- Black BA, Boehlert GW, Yoklavich MM (2008) A tree-ring approach to establishing climate-growth relationships for yelloweye rockfish in the northeast Pacific. *Fisheries Oceanography*, **5**, 368–379.
- Black BA, Copenheaver CA, Frank DC, Stuckey MJ, Kormanyos RE (2009) Multi-proxy reconstructions of northeastern Pacific sea surface temperature data from trees and Pacific geoduck. *Palaeogeography, Palaeoclimatology, Palaeoecology*, **278**, 40–47.
- Black BA, Schroeder ID, Sydeman WJ, Bograd SJ, Lawson PW (2010) Winter ocean conditions synchronize rockfish growth and seabird reproduction in the central California Current Ecosystem. *Canadian Journal of Fisheries and Aquatic Sciences*, **67**, 1149–1158.
- Bograd SJ, Schroeder I, Sarkar N, Qiu X, Sydeman WJ, Schwing FB (2009) The phenology of coastal upwelling in the California Current. *Geophysical Research Letters*, **36**, doi: 10.1029/2008GL035933.
- Daly EA, Brodeur RD, Weitkamp LA (2009) Ontogenetic shifts in diets of juvenile and subadult coho and Chinook salmon in coastal marine waters: important for marine survival? *Transactions of the American Fisheries Society*, **138**, 1420–1438.
- Dorman JG, Bollens SM, Slaughter AM (2005) Population biology of euphausiids off northern California and effects of short time-scale wind events on *Euphausia pacifica*. *Marine Ecology Progress Series*, **288**, 183–198.
- Field JC, Dick EJ, Key M *et al.* (2007) Population dynamics of an unexploited rockfish (*Sebastes jordani*) in the California Current. In: *Biology, Assessment, and Management of North Pacific Rockfishes* (eds Heifetz J, Dicosimo J, Garret AJ, Love MS, O'Connell VM, Stanley RD), pp. 451–472. Alaska Sea Grant, Anchorage, AK.
- Garcia-Reyes M, Largier J (2010) Observations of increased wind-driven coastal upwelling off central California. *Journal of Geophysical Research-Oceans*, **115**, doi: 10.1029/2009jc005576.
- Grissino-Mayer HD (2001) Evaluating crossdating accuracy: a manual and tutorial for the computer program COFECHA. *Tree-Ring Research*, **57**, 205–221.
- Hollowed AB, Wooster WS (1992) Variability of winter ocean conditions and strong year classes of northeast Pacific groundfish. *ICES Marine Science Symposium*, **195**, 433–444.
- Holmes RL (1983) Computer-assisted quality control in tree-ring dating and measurement. *Tree-Ring Bulletin*, **43**, 69–78.
- Hooff RC, Peterson WT (2006) Copepod biodiversity as an indicator of changes in ocean and climate conditions of the northern California current ecosystem. *Limnology and Oceanography*, **51**, 2607–2620.
- Lenarz WH, Echeverria TW (1986) Comparison of visceral fat and gonadal fat volumes of yellowtail rockfish, *Sebastes flavidus*, during a normal year and a year of El-Niño conditions. *Fishery Bulletin*, **84**, 743–745.
- Logerwell EA, Mantua N, Lawson PW, Francis RC, Agostini VN (2003) Tracking environmental processes in the coastal zone for understanding and predicting Oregon coho (*Oncorhynchus kisutch*) marine survival. *Fisheries Oceanography*, **12**, 554–568.
- Miller AK, Sydeman WJ (2004) Rockfish response to low-frequency ocean climate change as revealed by the diet of a marine bird over multiple time scales. *Marine Ecology Progress Series*, **281**, 207–216.
- Perez FE, Padin XA, Pazos Y *et al.* (2010) Plankton response to weakening of the Iberian coastal upwelling. *Global Change Biology*, **16**, 1258–1267.
- Roemmich D, McGowan J (1995) Climatic warming and the decline of zooplankton in the California Current. *Science*, **267**, 1324–1326.
- Schirripa MJ, Colbert JJ (2006) Interannual changes in sablefish (*Anoplopoma fimbria*) recruitment in relation to oceanographic conditions within the California Current System. *Fisheries Oceanography*, **15**, 25–36.
- Schroeder I, Sydeman WJ, Sarkar N, Bograd SJ, Schwing FB (2009) Winter pre-conditioning of seabird phenology in the California Current. *Marine Ecology Progress Series*, **393**, 211–223.
- Schwing FB, Mendelssohn R (1997) Increased coastal upwelling in the California Current System. *Journal of Geophysical Research-Oceans*, **102**, 3421–3438.
- Schwing FB, Murphree T, deWitt L, Green PM (2002a) The evolution of oceanic and atmospheric anomalies in the northeast Pacific during the El Niño and La Niña events of 1995–2001. *Progress in Oceanography*, **54**, 459–491.
- Schwing FB, Murphree T, Green PM (2002b) The Northern Oscillation Index (NOI): a new climate index for the northeast Pacific. *Progress in Oceanography*, **53**, 115–139.
- Schwing FB, O'Farrell M, Steger JM, Baltz K (1996) *Coastal upwelling indices, west coast of North America, 1946–1995*. In: NOAA Technical Memo, NOAA-TM-NMFS-SWFSC, Washington, DC, 144 pp.
- Shanks AL, Roegner GC (2007) Recruitment limitation in dungeness crab populations is driven by variation in atmospheric forcing. *Ecology*, **88**, 1726–1737.
- Sydeman WJ (1999). *Climate change and the population biology of common murre and other seabirds of the California Current*. PhD thesis, University of California, Davis, CA, 222 pp.
- Sydeman WJ, Allen SG (1999) Pinniped population dynamics in central California: correlations with sea surface temperature and upwelling indices. *Marine Mammal Science*, **15**, 446–461.
- Sydeman WJ, Hester MM, Thayer JA, Gress F, Martin P, Buffa J (2001) Climate change, reproductive performance and diet composition of marine birds in the southern California Current system, 1969–1997. *Progress in Oceanography*, **49**, 309–329.
- Sydeman WJ, Mills KL, Santora JA *et al.* (2009) Seabirds and climate in the California Current – a synthesis of change. *CalCOFI Reports*, **50**, 82–104.
- Thompson JE, Hannah RW (2010) Using cross-dating techniques to validate ages of aurora rockfish (*Sebastes aurora*): estimates of age, growth and female maturity. *Environmental Biology of Fishes*, **88**, 377–388.
- Wells BK, Friedland KD, Clarke LM (2003) Increment patterns in otoliths and scales from mature Atlantic salmon *Salmo salar*. *Marine Ecology Progress Series*, **262**, 293–298.
- Wells BK, Grimes CB, Sneva JG, McPherson S, Waldvogel JB (2008) Relationships between oceanic conditions and growth of Chinook salmon (*Oncorhynchus tshawytscha*) from California, Washington, and Alaska, USA. *Fisheries Oceanography*, **17**, 101–125.
- Wells BK, Grimes CB, Waldvogel JB (2007) Quantifying the effects of wind, upwelling, curl, sea surface temperature and sea level height on growth and maturation of a California Chinook salmon (*Oncorhynchus tshawytscha*) population. *Fisheries Oceanography*, **16**, 363–382.
- Wigley TML, Briffa KR, Jones PD (1984) On the average value of correlated time-series, with applications in dendroclimatology and hydrometeorology. *Journal of Climate and Applied Meteorology*, **23**, 201–213.
- Woodbury D (1999) Reduction of growth in otoliths of widow and yellowtail rockfish (*Sebastes entomelas* and *S. flavidus*) during the 1983 El Niño. *Fishery Bulletin*, **97**, 680–689.

Supporting Information

Additional Supporting Information may be found in the online version of this article:

Figure S1. Spearman's rank correlations between coastwide upwelling PC2 'winter mode' and mean January through March Hadley sea surface temperatures (HadISST; data available from <http://www.metoffice.gov.uk/hadobs/hadisst/>) in the Pacific basin. Gray lines enclose regions in which correlations were significant ($P < 0.001$).

Please note: Wiley-Blackwell are not responsible for the content or functionality of any supporting materials supplied by the authors. Any queries (other than missing material) should be directed to the corresponding author for the article.